



+ + +
+ *Digital Revolution* +
+



INTRODUCTION GLITRABIT

Glitra is an adaptation of “Glitter” which means "To sparkle with light or to shine brilliantly". Just like Light, Glitra is a source of illumination, every person who joins Glitra is destined to shine, such is our design that once a person joins our system, we assist him at every stage and ensure that he ultimately becomes Financially free.

Glitrabit.com is your premier source for everything GlitraBit related. You can also read the latest news, or engage with the community on our GlitraBit Forum. Please keep in mind that this is a commercial website that exchanges GlitraBit and other related Transactions.



INTRODUCTION - GBit

GBit is a dividend unit of GLITRABIT system. And as per the graph of points of the whole system, its values changes automatically. Its value depends on the following four factors:

- 1 PURCHASE OF GBit
- 2 SALES OF GBit
- 3 JOINING OF NEW USERS
- 4 PROMOTION OF USERS

It has been designed in such a way that its prices are mostly high. This gives excellent returns when invested for a longer.

NEW COMPENSATION PLAN (2019)

INTRODUCTION - GBit

	SILVER	IRIDIUM	TITANIUM	GOLD	PLATINIUM	RHODIUM	OSMIUM	CALIFORIUM
	\$30 Key	\$60 Key	\$150 Key	\$1100 Key	\$3300 Key	\$5500 Key	\$8800 Key	\$11000 Key
AUTOPOOL	Allocation \$5 Refer 4 Silver, Upgrade to IRIDIUM	Allocation \$20 Refer 6 Silver Upgrade to TITANIUM	Allocation \$50 Refer 8 Silver Upgrade to GOLD	Allocation \$500 Refer 10 Silver Upgrade to PLATINIUM	Allocation \$1500 Refer 12 Silver Upgrade to RHODIUM	Allocation \$2500 Refer 14 Silver Upgrade to OSMIUM	Allocation \$4000 Refer 16 Silver Upgrade to CALIFORNIUM	Allocation \$5000 Refer 20 Silver -----
FAST TRACK	Allocation \$15 Active Silver, All Level-1 will pay \$15	Allocation \$20 Active IRIDIUM All Level - 2 will Pay \$20	Allocation \$50 Active TITANIUM All Level - 3 will Pay \$50	Allocation \$500 Active GOLD All Level - 4 will Pay \$500	Allocation \$1500 Active PLATINIUM All Level - 5 will Pay \$1500	Allocation \$2500 Active RHODIUM All Level - 6 will Pay \$2500	Allocation \$4000 Active OSMIUM All Level - 7will Pay \$4000	Allocation \$5000 Active CALIFORNIUM All Level - 8 will Pay \$5000
TEAM BONUS	Allocation \$10 Active Silver, \$1.25 X 8 Level	Allocation \$20 Active IRIDIUM \$2.50 X 8 Level	Allocation \$50 Active TITANIUM \$6.25 X 8 Level	Allocation \$100 Active GOLD \$12.5 X 8 Level	Allocation \$300 Active PLATINIUM \$37.5 X 8 Level	Allocation \$500 Active RHODIUM \$62.5 X 8 Level	Allocation \$800 Active OSMIUM \$100 X 8 Level	Allocation \$1000 Active CALIFORNIUM \$125 X 8 Level

NEW COMPENSATION PLAN (2019)

INCOME PLAN - GBit



Glitrabit gives you an opportunity to make your future bright and gives you financial independence. For joining GBit system all you need is a person who is already a registered user/member, That is called sponsor or a referral.

In **Glitrabit (GBit)** the brand promoters and users are the most important part of business, and **Glitrabit** provides rewards to its users by a specially generated compensation plan. There are many ways to earn income with In **Glitrabit (GBit)** such as.

- 1 * GBit GROWTH INCOME
- 2 * GBit PURCHASE REVENUE
- 3 * GBit SELL REVENUE
- 4 FAST TRACK INCOME
- 5 AUTOPOOL INCOME
- 6 TEAM BONUS INCOME

The ranks of the registered users in the In **Glitrabit (GBit)** have been fixed. After joining, the rank is simple as USER and after activating it with a \$30 key, The same user is called "Silver". After that, they can promote their position for **Iridium, Titanium, Gold, Platinum, Rhodium, Osmium** or **Californium** on its own at desired times.

* Will get launched on Jan 1st 2020

4

FAST TRACK INCOME

You get \$15 directly from every Silver user you sponsor. After joining four Silver users directly, while you have earned income of \$60, you have to pay \$60 to the system, After that you get promoted and you are called "Iridium".

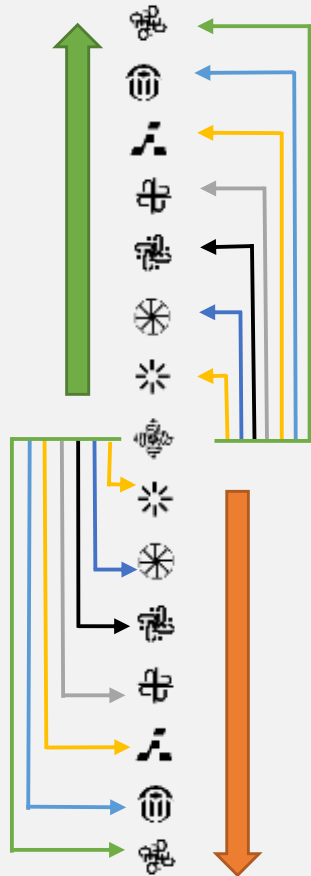
In any case, if Your id is Silver and an ID is upgraded to Iridium in your second level. In that case your ID will not get any benefit from that ID. The profit margin will increase as the price of the GBit, which will benefit all those users who have invested in the GBit. You must be at that level to take income of any specific level, to avoid this situation, upgrade your ID continuously. This rule will be applicable at all levels. Following the rules will provide you consistent benefits.

See image on next page for more information.



NEW COMPENSATION PLAN (2019)

FAST TRACK INCOME



Level	Icon	Designation	CFUU*	RREU**	NOUL***	Total Estimated Earnings
1		Silver	\$30	\$15	4	$\$15 \times 4 = \60
2		Iridium	\$60	\$20	16	$\$16 \times 20 = \320
3		Titanium	\$150	\$50	64	$\$50 \times 64 = \3200
4		Gold	\$1100	\$500	256	$\$500 \times 256 = \128000
5		Platinum	\$3300	\$1500	1024	$\$1500 \times 1024 = \1536000
6		Rhodium	\$5500	\$2500	4096	$\$2500 \times 4096 = \10240000
7		Osmium	\$8800	\$4000	16384	$\$4000 \times 16384 = \65536000
8		Californium	\$11000	\$5000	65536	$\$5000 \times 65536 = \327680000

*Charges for user upgrades.

**Revenue received from each user.

***Number Of Users in a Level.

5

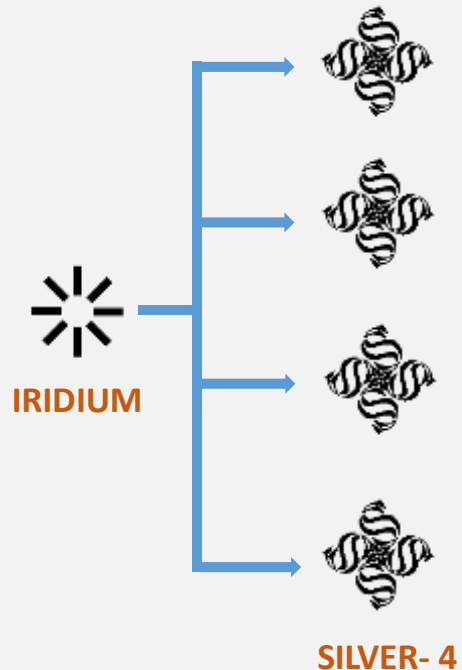
AUTOPOOL INCOME

Each Silver user will be able to earn this income. This income is distributed by a special type of software without any distinction depending on the basis of "first come first serve. Income would be added to your wallet but the user can withdraw only if he/she meet the specific conditions mentioned for each Autopool.

See image on next page for more information.



EXAMPLE FOR THE QUALIFIED USER

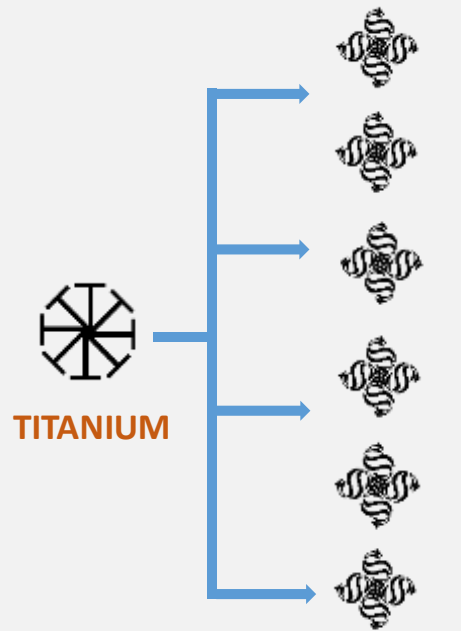


YOU	USERS	E.P.U	LEVEL INCOME	TOTAL EARNING
Level – 1	4	X \$ 0.10	\$ 0.40	\$ 0.40
Level – 2	16	X \$ 1.0	\$ 16	\$ 16.4
Level – 3	64	X \$ 1.0	\$ 64	\$ 80.4
Level – 4	256	X \$ 1.0	\$ 256	\$ 336.4
Level – 5	1024	X \$ 0.50	\$ 512	\$ 848.4
Level – 6	4096	X \$ 0.50	\$ 2048	\$ 2896.4
Level – 7	16384	X \$ 0.50	\$ 8192	\$ 11088.4
Level - 8	65536	X \$ 0.40	\$ 26214.4	\$ 37302.8

Note: #1 To get placed on Silver Autopool, you should be an active Silver.

#2 To withdraw income from Silver Autopool, Refer 4 Silver and upgrade yourself to Iridium.

EXAMPLE FOR THE QUALIFIED USER



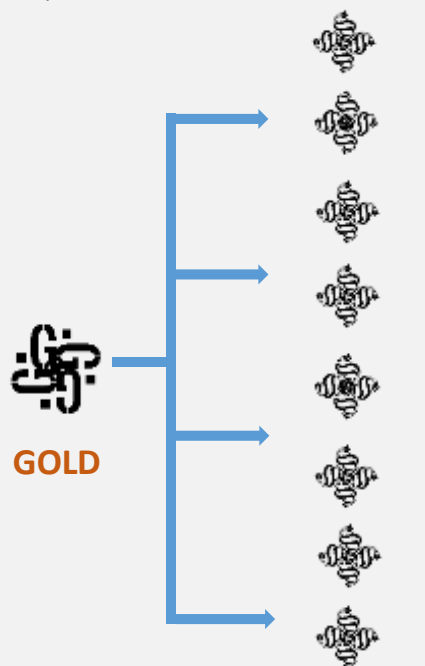
SILVER - 6

YOU	USERS	E.P.U	LEVEL INCOME	TOTAL EARNING
Level - 1	4	X \$ 2	\$ 8	\$ 8
Level - 2	16	X \$ 2	\$ 32	\$ 40
Level - 3	64	X \$ 4	\$ 256	\$ 296
Level - 4	256	X \$ 4	\$ 1024	\$ 1320
Level - 5	1024	X \$ 2	\$ 2048	\$ 3368
Level - 6	4096	X \$ 2	\$ 8192	\$ 11560
Level - 7	16384	X \$ 2	\$ 32768	\$ 44328
Level - 8	65536	X \$ 2	\$ 131072	\$ 175400

Note: #1 To get placed on Iridium Autopool, you should be an active Iridium.

#2 To withdraw income from Iridium Autopool, Refer 6 Silver and upgrade yourself to Titanium.

EXAMPLE FOR THE QUALIFIED USER

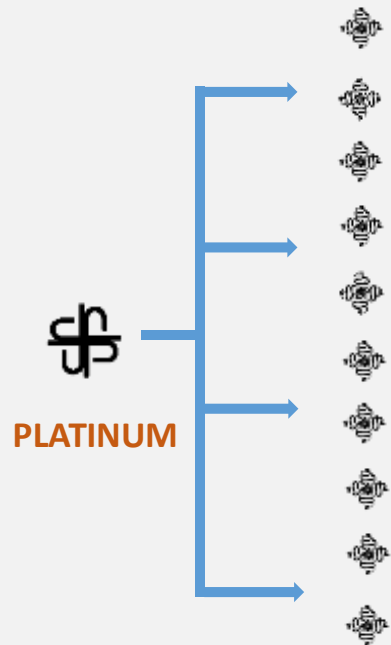


YOU	USERS	E.P.U	LEVEL INCOME	TOTAL EARNING
Level – 1	4	X \$ 5	\$ 20	\$ 20
Level – 2	16	X \$ 5	\$ 80	\$ 100
Level – 3	64	X \$ 10	\$ 640	\$ 740
Level – 4	256	X \$ 6	\$ 1536	\$ 2276
Level – 5	1024	X \$ 6	\$ 6144	\$ 8420
Level – 6	4096	X \$ 6	\$ 24576	\$ 32996
Level – 7	16384	X \$ 6	\$ 98304	\$ 131300
Level - 8	65536	X \$ 6	\$ 393216	\$ 524516

Note: #1 To get placed on Titanium Autopool, you should be an active Titanium.

#2 To withdraw income from Titanium Autopool, Refer 8 Silver and upgrade yourself to Gold.

EXAMPLE FOR THE QUALIFIED USER



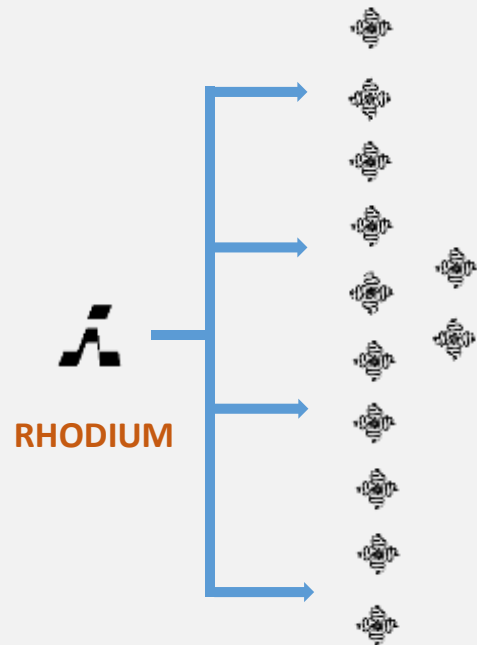
YOU	USERS	E.P.U	LEVEL INCOME	TOTAL EARNING
Level – 1	4	X \$ 60	\$ 240	\$ 240
Level – 2	16	X \$ 60	\$ 960	\$ 1200
Level – 3	64	X \$ 80	\$ 5120	\$ 6320
Level – 4	256	X \$ 60	\$ 15360	\$ 21680
Level – 5	1024	X \$ 60	\$ 61440	\$ 83120
Level – 6	4096	X \$ 60	\$ 245760	\$ 328880
Level – 7	16384	X \$ 60	\$ 983040	\$ 1311920
Level - 8	65536	X \$ 60	\$ 3932160	\$ 5244080

SILVER - 10

Note: #1 To get placed on Gold Autopool, you should be an active Gold.

#2 To withdraw income from Gold Autopool, Refer 10 Silver and upgrade yourself to Platinum.

EXAMPLE FOR THE QUALIFIED USER



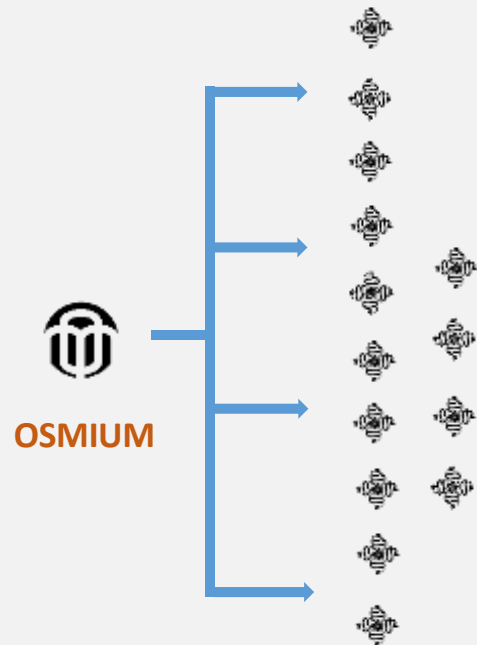
YOU	USERS	E.P.U	LEVEL INCOME	TOTAL EARNING
Level - 1	4	X \$ 180	\$ 720	\$ 720
Level - 2	16	X \$ 180	\$ 2880	\$ 3600
Level - 3	64	X \$ 240	\$ 15360	\$ 18960
Level - 4	256	X \$ 180	\$ 46080	\$ 65040
Level - 5	1024	X \$ 180	\$ 184320	\$ 249360
Level - 6	4096	X \$ 180	\$ 737280	\$ 986640
Level - 7	16384	X \$ 180	\$ 2949120	\$ 3035760
Level - 8	65536	X \$ 180	\$ 11796480	\$ 15732240

SILVER - 12

Note: #1 To get placed on Platinum Autopool, you should be an active Platinum.

#2 To withdraw income from Platinum Autopool, Refer 12 Silver and upgrade yourself to Rhodium.

EXAMPLE FOR THE QUALIFIED USER



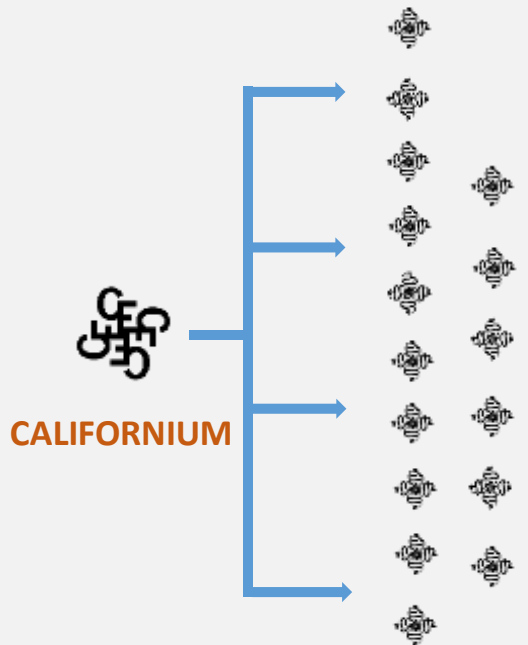
YOU	USERS	E.P.U	LEVEL INCOME	TOTAL EARNING
Level – 1	4	X \$ 300	\$ 1200	\$ 1200
Level – 2	16	X \$ 300	\$ 4800	\$ 6000
Level – 3	64	X \$ 400	\$ 25600	\$ 31600
Level – 4	256	X \$ 300	\$ 76800	\$ 108400
Level – 5	1024	X \$ 300	\$ 307200	\$ 415600
Level – 6	4096	X \$ 300	\$ 1228800	\$ 1644400
Level – 7	16384	X \$ 300	\$ 4915200	\$ 6559600
Level - 8	65536	X \$ 300	\$ 19660800	\$ 26220400

SILVER - 14

Note: #1 To get placed on Rhodium Autopool, you should be an active Rhodium.

#2 To withdraw income from Rhodium Autopool, Refer 14 Silver and upgrade yourself to Osmium.

EXAMPLE FOR THE QUALIFIED USER



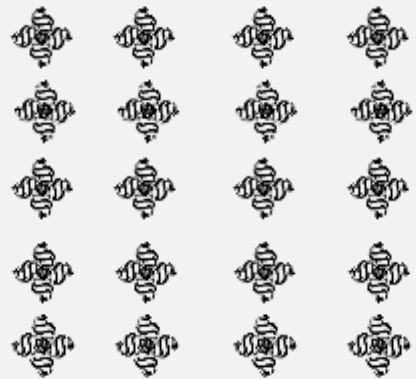
YOU	USERS	E.P.U	LEVEL INCOME	TOTAL EARNING
Level - 1	4	X \$ 480	\$ 1920	\$ 1920
Level - 2	16	X \$ 480	\$ 7680	\$ 9600
Level - 3	64	X \$ 640	\$ 40960	\$ 50560
Level - 4	256	X \$ 480	\$ 122880	\$ 173440
Level - 5	1024	X \$ 480	\$ 491520	\$ 664960
Level - 6	4096	X \$ 480	\$ 1966080	\$ 2631040
Level - 7	16384	X \$ 480	\$ 7864320	\$ 10495360
Level - 8	65536	X \$ 480	\$ 31457280	\$ 41952640

SILVER - 16

Note: #1 To get placed on Osmium Autopool, you should be an active Osmium.

#2 To withdraw income from Osmium Autopool, Refer 16 Silver and upgrade yourself to Californium.

EXAMPLE FOR THE QUALIFIED USER



SILVER - 20

YOU	USERS	E.P.U	LEVEL INCOME	TOTAL EARNING
Level – 1	4	X \$ 600	\$ 2400	\$ 2400
Level – 2	16	X \$ 600	\$ 9600	\$ 12000
Level – 3	64	X \$ 800	\$ 51200	\$ 63200
Level – 4	256	X \$ 600	\$ 513600	\$ 216800
Level – 5	1024	X \$ 600	\$ 614400	\$ 831200
Level – 6	4096	X \$ 600	\$ 2457600	\$ 3288800
Level – 7	16384	X \$ 600	\$ 9830400	\$ 13119200
Level - 8	65536	X \$ 600	\$ 39321600	\$ 52440800

Note: #1 To get placed on Californium Autopool, you should be an active Californium.

#2 To withdraw income from Californium Autopool, Refer 20 Silver.

6

TEAM BONUS INCOME

This is the latest way of income that is introduced by our system by GLITRABIT. From this way, you will be able to get **\$1.25** for every new **Silver** user, **\$2.5** for every **Iridium** upgradation, **\$6.25** for every **Titanium** upgradation, **\$12.5** for every **Gold** upgradation, **\$37.5** for every **Platinum** upgradation, **\$62.5** for every **Rhodium** upgradation, **\$100** for every **Osmium** upgradation and **\$125** for every **Californium** upgradation that will join under your team. In 8 levels in a particular chain, the income in this wallet of your account depends solely onto your team's performance. As soon as more people join your team the more income will be collected by the system into your wallet.



TEAM BONUS SILVER

YOU	USERS	E.P.U	LEVEL INCOME	TOTAL EARNING
Level – 1	4	X \$ 1.25	\$ 5	\$ 5
Level – 2	16	X \$ 1.25	\$ 20	\$ 25
Level – 3	64	X \$ 1.25	\$ 80	\$ 105
Level – 4	256	X \$ 1.25	\$ 320	\$ 425
Level – 5	1024	X \$ 1.25	\$ 1280	\$ 1705
Level – 6	4096	X \$ 1.25	\$ 5120	\$ 6825
Level – 7	16384	X \$ 1.25	\$ 20480	\$ 27305
Level - 8	65536	X \$ 1.25	\$ 81920	\$ 109225

Note: For withdrawal user should be Active Silver

TEAM BONUS IRIDIUM

YOU	USERS	E.P.U	LEVEL INCOME	TOTAL EARNING
Level – 1	4	X \$ 2.5	\$ 10	\$ 10
Level – 2	16	X \$ 2.5	\$ 40	\$ 50
Level – 3	64	X \$ 2.5	\$ 160	\$ 210
Level – 4	256	X \$ 2.5	\$ 640	\$ 850
Level – 5	1024	X \$ 2.5	\$ 2560	\$ 3410
Level – 6	4096	X \$ 2.5	\$ 10240	\$ 13650
Level – 7	16384	X \$ 2.5	\$ 40960	\$ 54610
Level - 8	65536	X \$ 2.5	\$ 163840	\$ 218450

Note: For withdrawal user should be Active Iridium

TEAM BONUS TITANIUM

YOU	USERS	E.P.U	LEVEL INCOME	TOTAL EARNING
Level – 1	4	X \$ 6.25	\$ 25	\$ 25
Level – 2	16	X \$ 6.25	\$ 100	\$ 125
Level – 3	64	X \$ 6.25	\$ 400	\$ 525
Level – 4	256	X \$ 6.25	\$ 1600	\$ 2125
Level – 5	1024	X \$ 6.25	\$ 6400	\$ 8525
Level – 6	4096	X \$ 6.25	\$ 25600	\$ 34125
Level – 7	16384	X \$ 6.25	\$ 102400	\$ 136526
Level - 8	65536	X \$ 6.25	\$ 409600	\$ 546125

Note: For withdrawal user should be Active Titanium

TEAM BONUS GOLD

YOU	USERS	E.P.U	LEVEL INCOME	TOTAL EARNING
Level – 1	4	X \$ 12.5	\$ 50	\$ 50
Level – 2	16	X \$ 12.5	\$ 200	\$ 250
Level – 3	64	X \$ 12.5	\$ 800	\$ 1050
Level – 4	256	X \$ 12.5	\$ 3200	\$ 4250
Level – 5	1024	X \$ 12.5	\$ 12800	\$ 17050
Level – 6	4096	X \$ 12.5	\$ 51200	\$ 68250
Level – 7	16384	X \$ 12.5	\$ 204800	\$ 273050
Level - 8	65536	X \$ 12.5	\$ 819200	\$ 1092250

Note: For withdrawal user should be Active Gold

TEAM BONUS PLATINUM

YOU	USERS	E.P.U	LEVEL INCOME	TOTAL EARNING
Level – 1	4	X \$ 37.5	\$ 150	\$ 150
Level – 2	16	X \$ 37.5	\$ 600	\$ 750
Level – 3	64	X \$ 37.5	\$ 2400	\$ 3150
Level – 4	256	X \$ 37.5	\$ 9600	\$ 12750
Level – 5	1024	X \$ 37.5	\$ 38400	\$ 51150
Level – 6	4096	X \$ 37.5	\$ 153600	\$ 204750
Level – 7	16384	X \$ 37.5	\$ 614400	\$ 819150
Level - 8	65536	X \$ 37.5	\$ 2457600	\$ 3276750

Note: For withdrawal user should be Active Platinum

TEAM BONUS RHODIUM

YOU	USERS	E.P.U	LEVEL INCOME	TOTAL EARNING
Level – 1	4	X \$ 62.5	\$ 250	\$ 250
Level – 2	16	X \$ 62.5	\$ 1000	\$ 1250
Level – 3	64	X \$ 62.5	\$ 4000	\$ 5250
Level – 4	256	X \$ 62.5	\$ 16000	\$ 21250
Level – 5	1024	X \$ 62.5	\$ 64000	\$ 85250
Level – 6	4096	X \$ 62.5	\$ 256000	\$ 341250
Level – 7	16384	X \$ 62.5	\$ 1024000	\$ 1365250
Level - 8	65536	X \$ 62.5	\$ 4096000	\$ 5461250

Note: For withdrawal user should be Active Rhodium

TEAM BONUS OSMIUM

YOU	USERS	E.P.U	LEVEL INCOME	TOTAL EARNING
Level – 1	4	X \$ 100	\$ 400	\$ 400
Level – 2	16	X \$ 100	\$ 1600	\$ 2000
Level – 3	64	X \$ 100	\$ 6400	\$ 8400
Level – 4	256	X \$ 100	\$ 25600	\$ 34000
Level – 5	1024	X \$ 100	\$ 102400	\$ 136400
Level – 6	4096	X \$ 100	\$ 409600	\$ 546000
Level – 7	16384	X \$ 100	\$ 1638400	\$ 2184400
Level - 8	65536	X \$ 100	\$ 6553600	\$ 8738000

Note: For withdrawal user should be Active Osmium

TEAM BONUS CALIFORNIUM

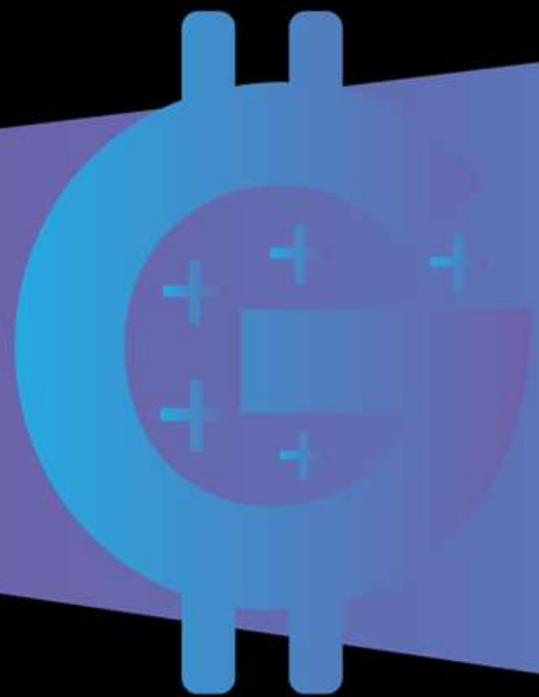
YOU	USERS	E.P.U	LEVEL INCOME	TOTAL EARNING
Level – 1	4	X \$ 125	\$ 500	\$ 500
Level – 2	16	X \$ 125	\$ 2000	\$ 2500
Level – 3	64	X \$ 125	\$ 8000	\$ 10500
Level – 4	256	X \$ 125	\$ 32000	\$ 42500
Level – 5	1024	X \$ 125	\$ 128000	\$ 170500
Level – 6	4096	X \$ 125	\$ 512000	\$ 682500
Level – 7	16384	X \$ 125	\$ 2048000	\$ 2730500
Level - 8	65536	X \$ 125	\$ 8192000	\$ 10922500

Note: For withdrawal user should be Active Californium



*Move With Us
To Change The
Globe Digitally*





THANK YOU

LITRA

BIT of MORE